

BICYCLE PARKING

BLDG TYPE	PARKING REQUIRED		PROVIDED IN BUILDING		PROVIDED OUTSIDE	
	LONG TERM (PER BLDG)	SHORT TERM (PER BLDG)	LONG TERM (PER BLDG)	SHORT TERM (PER BLDG)	LONG TERM (PER BLDG)	SHORT TERM (PER BLDG)
A	27	9	24	0	3	9
A1	33	11	24	0	9	11
A2	36	12	24	0	12	12
B	36	12	24	0	12	12
C	24	8	0	0	24	8
CLUBHOUSE MANAGERS OFFICE 1	9	3	0	0	10	4
CLUBHOUSE MANAGERS OFFICE 2	4	1	0	0	4	2
LEASING OFFICE	1	1	0	0	2	2
CENTRAL OFFICE	2	2	0	0	2	2
FIELD MAINTENANCE OFFICE 1	2	2	0	0	2	2
FIELD MAINTENANCE OFFICE 2	2	2	0	0	2	2
MAINTENANCE MANAGEMENT AND STORAGE	2	1	0	0	2	2

NOTES

BIKE PARKING TO COMPLY WITH STANDARDS OUTLINED IN THE CITY OF DAVIS BIKE PARKING POLICY AND APPENDIX N 'BICYCLE PARKING ORDINANCE'.
 BLDG A - ALL 2-BEDROOM UNITS
 BLDG A1 - MIX OF 2-BEDROOM AND 4-BEDROOM UNITS
 BLDG A2 - ALL 4-BEDROOM UNITS

IRRIGATION DESIGN INTENT

1. THESE PLAN SHALL COMPLY WITH THE REQUIREMENTS OF THE STATE OF CALIFORNIA'S MODEL WATER EFFICIENT LANDSCAPE ORDINANCE (MWELO), AND THE CITY OF DAVIS DESIGN GUIDELINES.
2. THE IRRIGATION SYSTEM SHALL BE DESIGNED TO PROVIDE THE MINIMUM AMOUNT OF WATER NECESSARY TO SUSTAIN GOOD PLANT HEALTH.
3. THE IRRIGATION SYSTEM IS TO BE A FULLY AUTOMATIC, WEATHER-BASED SYSTEM USING RAIN SENSOR, LOW FLOW DRIP AND BUBBLER DISTRIBUTION, AND SPRINKLERS WITH MATCHED PRECIPITATION RATE NOZZLES DESIGNED FOR HEAD-TO-HEAD COVERAGE.
4. ALL SELECTED COMPONENTS SHALL BE PERMANENT, COMMERCIAL GRADE, SELECTED FOR DURABILITY, VANDAL RESISTANCE, AND MINIMUM MAINTENANCE REQUIREMENT.
5. THE SYSTEM SHALL INCLUDE A MASTER CONTROL VALVE AND FLOW SENSING CAPABILITY WHICH WILL SHUT DOWN ALL OR PART OF THE SYSTEM IF LEAKS ARE DETECTED.
6. THE IRRIGATION SYSTEM SHALL BE DESIGNED TO DELIVER WATER TO HYDROZONES BASED ON MOISTURE REQUIREMENTS OF THE PLANT GROUPING.
7. IRRIGATION SYSTEM FOR THE URBAN FOREST WILL USE WELL WATER. IRRIGATION SYSTEM FOR THE SITE WILL USE THE MUNICIPAL WATER SUPPLY.

PLANTING DESIGN INTENT

1. ALL TREES WITHIN 5' OF PAVEMENT SHALL USE TREE ROOT BARRIERS.
2. ALL TREES, EXISTING AND PROPOSED, SHALL BE A MINIMUM OF FIVE (5) FEET FROM ANY EXISTING OR PROPOSED ELECTRIC DEPARTMENT FACILITIES. EXISTING TREES IN CONFLICT WILL HAVE TO BE REMOVED. TREES SHALL NOT BE PLANTED IN PUE'S OR ELECTRIC EASEMENTS.
3. THE PLANTING DESIGN SHALL UTILIZE A VARIETY OF MEDITERRANEAN-STYLE, NATIVE, AND DROUGHT-TOLERANT PLANT SPECIES TO CREATE LAYERS OF COLOR AND TEXTURE TO COMPLEMENT THE ARCHITECTURE AND SETTING.
4. PLANT SPECIES SHALL BE SELECTED BASED ON LOCAL CLIMATE SUITABILITY, DISEASE AND PEST RESISTANCE, AND WATER-USE AS LISTED IN THE STATE OF CALIFORNIA'S MODEL WATER EFFICIENT LANDSCAPE ORDINANCE (MWELO) PLANT LIST, WUCOLS IV.
5. 80% OF PLANT MATERIAL TO BE NATIVE OR LOW WATER USE AND FOLLOW MWELO GUIDELINES.
6. TURF/LAWN SHALL NOT EXCEED 10% OF THE LANDSCAPE AREA. TURF SPECIES, IF INCLUDED, SHALL BE A FESCUE-BLEND TURF GRASS TO MINIMIZE WATER CONSUMPTION.
7. NO PLANT CONSIDERED INVASIVE IN THE REGION AS LISTED BY THE CAL-IPC WILL BE USED.
8. THE PLANTING DESIGN SHALL ALLOW FOR THE PLANTS TO REACH THEIR NATURAL, FULL-GROWN SIZE TO ELIMINATE THE NEED FOR EXCESSIVE PRUNING OR HEDGING.
9. PLANTS SHALL BE GROUPED IN HYDROZONES BASED ON WATER USE AND EXPOSURE.
10. TREE LOCATIONS SHALL BE DESIGNED FOR MAXIMUM AESTHETIC EFFECTS AND PASSIVE SOLAR BENEFITS, CREATING SUMMER SHADE AND WINTER SUN EXPOSURE.
11. ALL PLANTING AREAS SHALL RECEIVE A 3-INCH LAYER OF MULCH.
12. FOR THE PURPOSES OF THIS PLANNING APPLICATION, A LIMITED NUMBER TO TREE SYMBOLS HAVE BEEN USED. ONE SYMBOL IS SHOWN FOR EACH CANOPY SIZE RANGE; HOWEVER, THE DESIGN INTENT TO USE A VARIETY OF SPECIES THROUGHOUT THE PARKING AREA AND SITE FOR A DIVERSITY IN COLOR, TEXTURE, FORM, ETC.

TOTAL RESIDENTIAL BICYCLE PARKING REQUIREMENT

BLDG TYPES	A(2-BED UNITS)	A1(MIX OF 2-BED/4-BED UNITS)	A2(4-BED UNITS)	B	C	SITE TOTAL
	BLDG COUNT	19	1	4	24	
UNITS PER BLDG	12	12	12	12	32	704 UNITS
BEDROOM PER BLDG	36	36	36	36	32	1856 BEDROOMS
BEDS PER BLDG	36	44	48	48	32	2200 BEDS
BIKE PARKING REQUIRED						
LONG TERM	27	33	36	36	24	
SHORT TERM	9	11	12	12	8	
SITE TOTAL	684	44	192	1152	128	2200 RESIDENTIAL BIKE PARKING SPACES REQUIRED

TOTAL NON-RESIDENTIAL BICYCLE PARKING REQUIREMENT

NEED TYPE	# OF BIKE PARKING SPACES REQUIRED/PROPOSED
OFFICE & OPERATIONS	9
GUEST BIKE STALLS	110
RECREATION BUILDINGS	65
TOTAL	184

SUMMARY

THE PROJECT REQUIRES 2,200 RESIDENTIAL BIKE PARKING SPACES AND 184 NON-RESIDENTIAL BIKE PARKING SPACES FOR A TOTAL OF 2,384 BIKE PARKING SPACES REQUIRED. WE ARE PROVIDING UP TO 2,400 SHORT TERM AND LONG TERM BIKE PARKING SPACES ON-SITE FOR RESIDENTS AND GUESTS.

The Promenade
 Davis, CA

Davis Gateway
 3500 Anderson Road
 Davis, CA 95616

Sheet Title:
LANDSCAPE NOTES AND CALCULATIONS

Job No. 22004
 Date: 05/12/2023
 Scale: NA
 Drawn By: WM/RV/DF

Sheet No:

L2.01

PRELIMINARY PLANT PALETTE			
SYMBOL	BOTANICAL NAME	COMMON NAME	SPACING
TREES – 35' CANOPY			
	CELTIS AUSTRALIS	EUROPEAN HACKBERRY	35' OC
	PLATANUS ACERIFOLIA 'BLOODGOOD'	BLOODGOOD LONDON PLANE	
	PLATANUS RACEMOSA	CALIFORNIA SYCAMORE	
	QUERCUS AGRIFOLIA	COAST LIVE OAK	
	QUERCUS LOBATA	VALLEY OAK	
	QUERCUS SHUMARDII	SHUMARD RED OAK	
	QUERCUS SUBER	CORK OAK	
QUERCUS WISLINZENII	INTERIOR LIVE OAK		
TREES – 30' CANOPY			
	ACER RUBRUM 'OCTOBER GLORY'	OCTOBER GLORY RED MAPLE	30' OC
	CEDRUS DEODARA	DEODAR CEDAR	
	GINKGO BILOBA 'AUTUMN GOLD' (MALE CLONES)	FRUITLESS AUTUMN GOLD GINKGO	
	PISTACIA CHINENSIS 'KEITH DAVEY' (MALE CLONES)	FRUITLESS CHINESE PISTACHE	
	TILIA CORDATA	LITTLE LEAF LINDEN	
TREES – 25' CANOPY			
	*AESCLUS CALIFORNICA	CALIFORNIA BUCKEYE	25' OC
	KOELREUTERIA ELEGANS	FORMOSAN FLAME TREE	
	LAURUS NOBILIS	GRECIAN LAUREL	
	*PINUS EDULIS	PINYON PINE	
	OLEA EUROPAEA 'SWAN HILL'	FRUITLESS OLIVE	
	ULMUS 'FRONTIER'	HYDRID ELM	
TREES – 20' CANOPY			
	ACER BUERGERANUM	TRIDENT MAPLE	20' OC
	*ACER PALMATUM 'SANGO KAKU'	CORAL BARK JAPANESE MAPLE	
	ARBUTUS 'MARINA'	MARINA MADRONE	
	ARBUTUS UNEDO	STRAWBERRY TREE	
	*CERCIS OCCIDENTALIS	WESTERN REDBUD	
	*CORDIA BOISSIERI	TEXAS OLIVE	
	COTINUS COGGYGRIA	SMOKE TREE	
	*LAGERSTROEMIA INDICA X FAURIEI 'TBD'	CRAPPE MYRTLE	
	LAURUS NOBILIS	GRECIAN LAUREL	
	MAGNOLIA 'ELIZABETH'	ELIZABETH MAGNOLIA	
	*OSMANTHUS FRAGRANS	SWEET OLIVE	
	PODOCARPUS GRACILIOR	FERN PINE	
	RHAPHIOLEPIS X 'MONTIC'	MAJESTIC BEAUTY INDIAN HAWTHORN	
	PALMS		
	WASHINGTONIA FILIFERA	CALIFORNIA FAN PALM	PER PLAN
SCREENING			
	ARCTOSTAPHYLOS 'SUNSET'	SUNSET MANZANITA	12'-0" OC
	CARPENTERIA CALIFORNICA 'ELIZABETH'	BUSH ANEMONE	6'-0" OC
	CEANOTHUS ARBOREUS 'CLIFF SCHMIDT'	WILD LILAC	15'-0" OC
	FREMONTODENDRON CALIFORNICUM	COMMON FLANNEL BUSH	12'-0" OC
	GREVILLEA LANIGERA	WOOLY GREVILLEA	8'-0" OC
	HETEROMELES ARBUTIFOLIA	TOYON	15'-0" OC
	MYRICA CALIFORNICA	PACIFIC WAX MYRTLE	15'-0" OC
	PITTIOSPORUM CRASSIFOLIUM	KARO	8'-0" OC
	PRUNUS ILICIFOLIA SSP. LYONII	CATALINA CHERRY	15'-0" OC
	RHAMNUS CALIFORNICA	COFFEEBERRY	12'-0" OC
	SHRUBS/GRASSES/PERENNIALS		
	ACHILLEA 'MOONSHINE'	MOONSHINE YARROW	2'-0" OC
	AGAVE AMERICANA	CENTURY PLANT	10'-0" OC
	AGAVE SALMIANA VAR CRASSISPINA	GIANT AGAVE	6'-0" OC
	AGAVE SPECIES	AGAVE	VARIES
	ANIGOZANTHOS SPECIES	KANGAROO PAW	VARIES
	ARCTOSTAPHYLOS 'DR HURD'	DR HURD MANZANITA	12'-0" OC
	ARCTOSTAPHYLOS 'HOWARD MCMINN'	HOWARD MCMINN MANZANITA	6'-0" OC
	ARCTOSTAPHYLOS 'JOHN DOURLEY'	JOHN DOURLEY MANZANITA	4'-0" OC
	ARTEMISIA 'POWIS CASTLE'	POWIS CASTLE ARTEMISIA	3'-0" OC
	AZALEA INDICA 'ALASKA'	AZALEA	5'-0" OC
	CALLISTEMON CITINUS	LEMON BOTTLEBRUSH	12'-0" OC
	CALLISTEMON VIMINALIS 'LITTLE JOHN'	DWARF BOTTLEBRUSH	4'-0" OC
	CARPENTERIA CALIFORNICA 'ELIZABETH'	BUSH ANEMONE	5'-0" OC
	CEANOTHUS 'DARK STAR'	DARK STAR CALIFORNIA LILAC	9'-0" OC
	CISTUS X HYBRIDUS	WHITE ROCKROSE	4'-6" OC
	CISTUS X PURPUREUS	ORCHID ROCKROSE	6'-0" OC

PRELIMINARY PLANT PALETTE, CONT					
SYMBOL	BOTANICAL NAME	COMMON NAME	SPACING		
SHRUBS/GRASSES/PERENNIALS, CONT.					
	DIETES BICOLOR	FORTNIGHT LILY	2'-6" OC		
	DIETES VEGETA	FORTNIGHT LILY	3'-6" OC		
	DODONAEA VISCOSA 'PURPUREA'	PURPLE HOP BUSH	8'-0" OC		
	ECHIUM CANDICANS 'SELECT BLUE'	PRIDE OF MADEIRA	6'-0" OC		
	FESUCA IDAHOENSIS	IDAHOE FESCUE	1'-6" OC		
	FESTUCA MAIREI	ATLAS FESCUE	3'-0" OC		
	FESTUCA RUBRA	CREEPING RED FESCUE	2'-0" OC		
	GREVILLEA LAVANDULACEA	LAVENDER GREVILLEA	6'-0" OC		
	HESPERALOE PARVIFOLIA	RED YUCCA	3'-0" OC		
	HEUCHERA 'WENDY'	CORAL BELLS	2'-0" OC		
	KNIPHOFIA UVARIA	RED HOT POKER	3'-0" OC		
	LEONOTIS LEONURUS	LION'S TAIL	4'-0" OC		
	LEUCOPHYLLUM LAEVIGATUM	CHIHUAHUA SAGE	5'-0" OC		
	LOMANDRA 'EVERGREEN BABY'	FINELEAF MAT RUSH	1'-6" OC		
	LOMANDRA LONGIOLIA 'BREEZE'	DWARF MAT RUSH	3'-0" OC		
	LUPINUS ALBIFRONS	SILVER BUSH LUPINE	3'-0" OC		
	MAHONIA PINNATA 'KEN HARTMAN'	SHINY LEAF MAHONIA	4'-0" OC		
	MIMULUS AURANTIACUS	STICKY MONKEY FLOWER	4'-6" OC		
	MUHLENBERGIA CAPILLARIS	PINK MUHLY	6'-0" OC		
	MUHLENBERGIA DUBIA	PINE MUHLY	2'-0" OC		
	MUHLENBERGIA RIGENS	DEER GRASS	4'-0" OC		
	NANDINA DOMESTICA 'COMPACTA'	HEAVENLY BAMBOO	3'-0" OC		
	OPUNTIA FICUS-INDICA 'BURBANK SPINELESS'	NOPAL	5'-0" OC		
	PENSTEMON HETEROPHYLLUS	FOOTHILL BEARDTONGUE	1'-6" OC		
	PENSTEMON GLOXINIOIDES 'MIDNIGHT'	BEARD TONGUE	3'-0" OC		
	PHLOMIS FRUTICOSA	JERUSALEM SAGE	3'-0" OC		
	PHORMIUM SPECIES	FLAX	VARIES		
	PITTIOSPORUM TOBIRA	MOCK ORANGE	4'-0" OC		
	PRUNUS CAROLINIANA 'BRIGHT 'N TIGHT'	CAROLINA LAUREL	6'-0" OC		
	RHAMNUS CALIFORNICA 'EVE CASE'	COFFEEBERRY	6'-0" OC		
	RHAPHIOLEPIS INDICA	INDIAN HAWTHORN	5'-0" OC		
	RIBES SANGUINEUM	RED FLOWERING CURRENT	4'-0" OC		
	ROSMARINUS OFFICINALIS 'TUSCAN BLUE'	TUSCAN BLUE ROSEMARY	4'-0" OC		
	SALVIA CLEVELANDII 'WINNIFRED GILMAN'	BLUE SAGE	4'-0" OC		
	SALVIA GREGGII 'ALBA'	WHITE TEXAS SAGE	2'-6" OC		
	SOLLYA HETEROPHYLLA	AUSTRALIAN BLUEBELL	3'-0" OC		
	TULBAGHIA VIOLACEA	SOCIETY GARLIC	1'-6" OC		
	WESTRINGIA FRUTICOSA 'BLUE GEM'	BLUE GEM WESTRINGIA	4'-6" OC		
	XYLOSMA CONGESTUM	XYLOSMA	9'-0" OC		
	GROUNDCOVER				
		ARCTOSTAPHYLOS 'EMERALD CARPET'	EMERALD CARPET MANZANITA	4'-0" OC	
		ARTEMISIA CALIFORNICA 'CANYON GRAY'	COASTAL SAGEBRUSH	8'-0" OC	
		BACCHARIS PILULARIS 'PIGEON POINT'	PIGEON POINT COYOTE BRUSH	8'-0" OC	
		CEANOTHUS G.H. 'YANKEE POINT'	YANKEE POINT CALIFORNIA LILAC	8'-0" OC	
		CISTUS S. 'PROSTRATUS'	SAGELEAF ROCKROSE	4'-0" OC	
		COTONEASTER DAMMERI 'CORAL BEAUTY'	CORAL BEAUTY COTONEASTER	6'-0" OC	
		DELOSPERMA COOPERI 'TABLE MOUNTAIN'	TABLE MOUNTAIN ICE PLANT	2'-0" OC	
		LANTANA MONTEVIDENSIS	PURPLE TRAILING LANTANA	4'-0" OC	
		MAHONIA REPENS	CREEPING MAHONIA	4'-0" OC	
		MYOPORUM PARVOLIUM 'PUTAH CREEK'	CREEPING MYOPORUM	5'-0" OC	
		ROSMARINUS OFFICINALIS 'HUNTINGTON CARPET'	HUNTINGTON CARPET ROSEMARY	6'-0" OC	
		SALVIA SONOMENSIS	CREEPING SAGE	6'-0" OC	
		ZAUSCHNERIA 'EVERETT'S CHOICE'	CALIFORNIA FUCHSIA	4'-0" OC	
		VINES			
			DISTICTIS BUCCINATORIA	BLOOD-RED TRUMPET VINE	PER PLAN
HARDENBERGIA VIOLACEA			PURPLE LILAC VINE	PER PLAN	
STORMWATER					
	ACHILLEA MILLEFOLIUM	YARROW	3'-0" OC		
	BIOFILTRATION SOD MIX	-	-		
	DIETES BICOLOR	FORTNIGHT LILY	2'-6" OC		
	FESTUCA MAIREI	ATLAS FESCUE	3'-0" OC		
	FESTUCA RUBRA	CREEPING RED FESCUE	2'-0" OC		

- NOTES**
- REFER TO SHEET L2.03 FOR URBAN FOREST PALETTE.
 - *SPECIES ARE APPROVED FOR USE BELOW PG&E DISTRIBUTION LINES PER PG&E 'RIGHT TREE RIGHT PLACE' PUBLICATION.
 - ALL TREES TO BE INSTALLED AT 15-GALLON CONTAINER SIZE. ALL SHRUBS AND GROUNDCOVER 1-GALLON CONTAINER SIZE.

The Promenade
Davis, CA

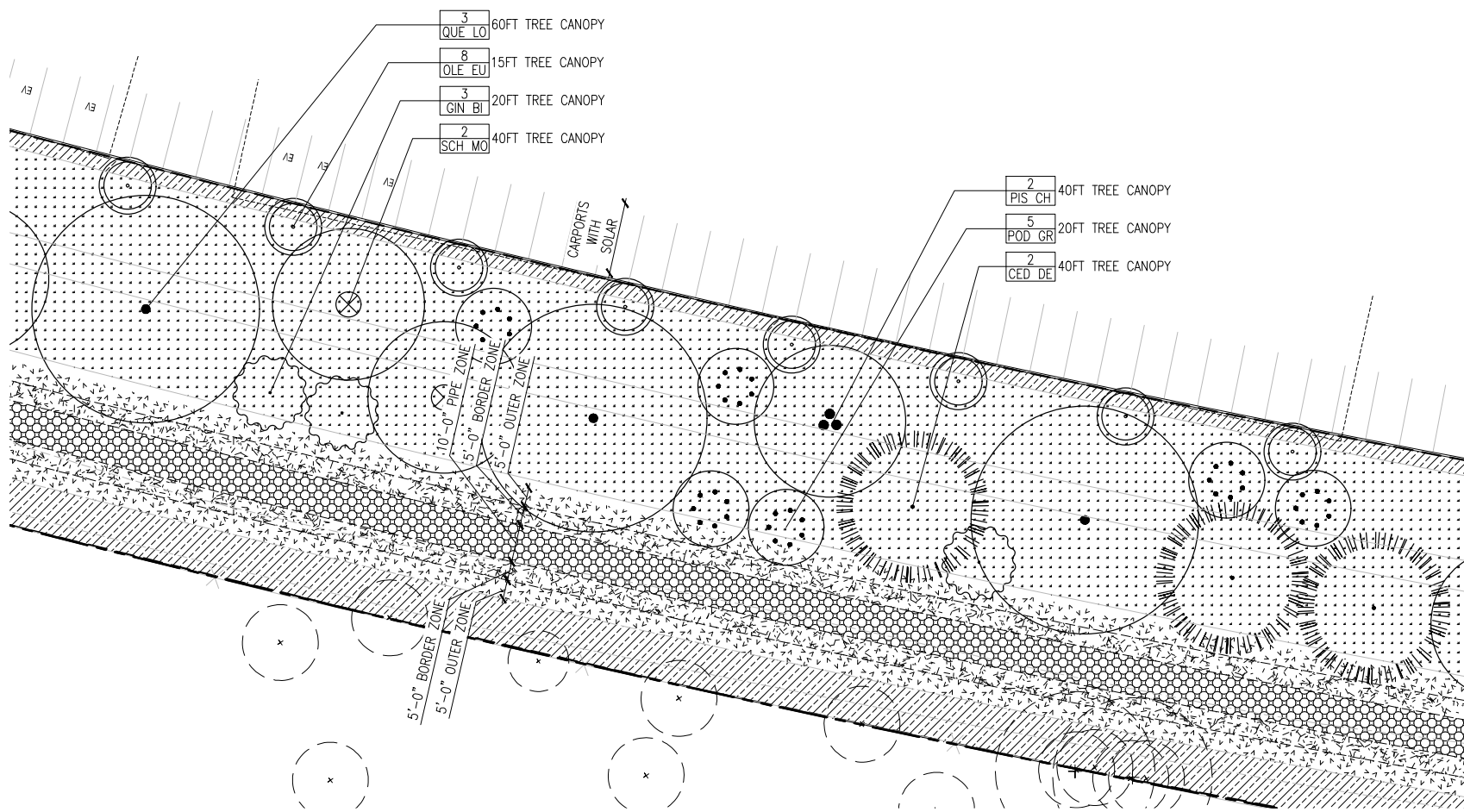
Davis Gateway
3500 Anderson Road
Davis, CA 95616

Sheet Title:
PRELIMINARY PLANT PALETTE

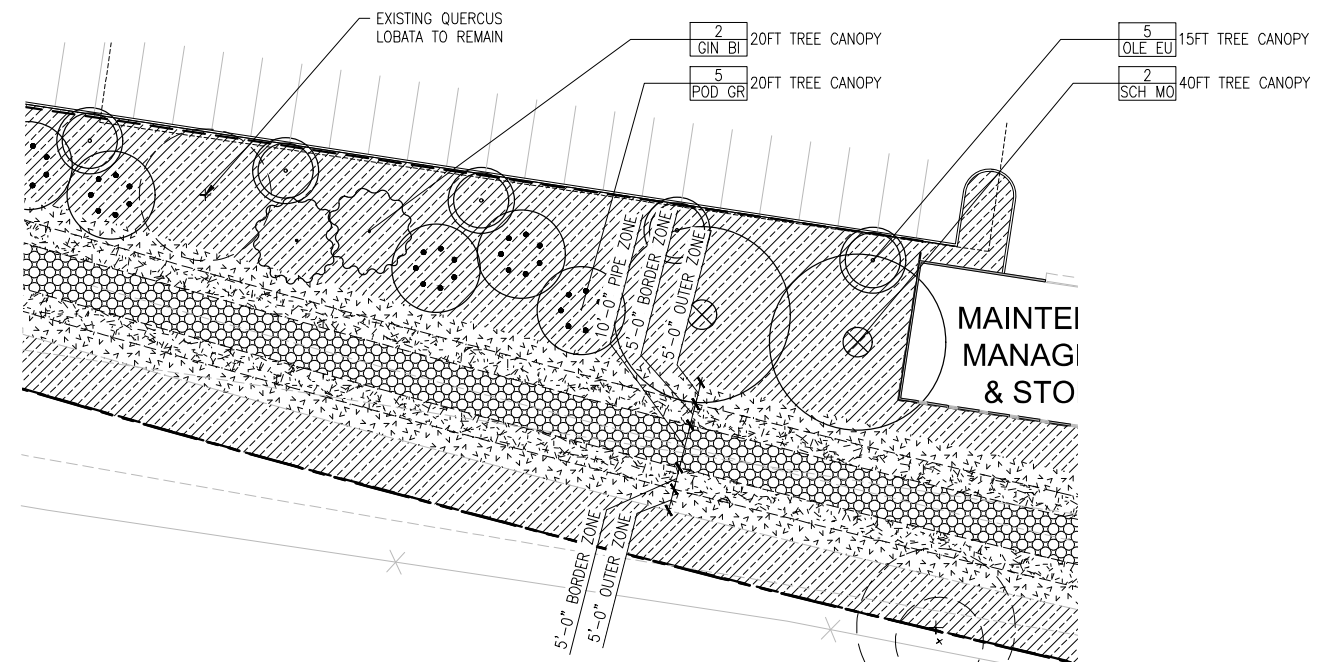
Job No. 22004
Date: 05/12/2023
Scale: NA
Drawn By: WM/RV/DF

Sheet No:

L2.02



1 SOLAR/STORMWATER/PG&E
1"=20'-0"



2 PG&E
1"=20'-0"

PRELIMINARY PLANT PALETTE - URBAN FOREST

SYMBOL	BOTANICAL NAME	COMMON NAME	CONF/EVG/DEC	NATIVE
TREES				
CED DE	CEDRUS DEODARA	DEODAR CEDAR	EVERGREEN	-
GIN BI	GINKGO BILOBA 'AUTUMN GOLD'	GINKGO	DECIDUOUS	-
OLE EU	OLEA EUROPAEA - FRUITLESS VARIETY	FRUITLESS OLIVE	EVERGREEN	-
PIS CH	PISTACIA CHINENSIS 'KEITH DAVEY' OR 'RED PUSH'	CHINESE PISTACHE	DECIDUOUS	-
POD GRA	PODOCARPUS GRACILIOR	FERN PINE	EVERGREEN	-
QUE AG	QUERCUS AGRIFOLIA	LIVE OAK	EVERGREEN	X
QUE LO	QUERCUS LOBATA	VALLEY OAK	DECIDUOUS	X
SCH MO	SCHINUS MOLLE	CALIFORNIA PEPPER	EVERGREEN	X
UNDERSTORY PLANTING				
	BACCHARIS PILULARIS (UPRIGHT FORM)	COYOTE BRUSH		
	CALLISTEMON CITRINUS	BOTTLEBRUSH		
	CEANOTHUS VARIETIES	CALIFORNIA LILACS		
	COTINUS COGGYGRIA 'PURPUREA'	SMOKE BUSH		
	ELAEGNUS EBBINGEI	EBBING'S SILVERBERRY		
	FEIJOA SELLOWIANA	PINEAPPLE GUAVA		
	GARRYA ELLIPTICA	SILKTASSEL BUSH		
	GREVILLEA VARIETIES	GREVILLEA		
	HETEROMELES ARBUTIFOLIA	TOYON		
	LAURUS X SARATOGA	SARATOGA BAY		
	NERIUM OLEANDER 'SISTER AGNES'	OLEANDER (WHITE FLOWER)		
	PRUNUS ILICIFOLIA	HOLLYLEAF CHERRY		
	RHAMNUS ALTERNUS 'JOHN EDWARDS'	ITALIAN BUCKTHORN		
	RHAMNUS CALIFORNICA	COFFEEBERRY		
	XYLOSMA CONGESTUM	SHINY XYLOSMA		
PG&E EASEMENT - OUTER ZONE				
	SHRUBS & TREES UP TO 36" DIA TRUNK			
PG&E EASEMENT - BORDER ZONE				
	SMALL-MEDIUM SHRUBS UP TO 8" DIA TRUNK			
PG&E EASEMENT - PIPE SAFETY ZONE				
	LOW GROWING PLANTS			

URBAN FOREST DESIGN INTENT

1. PALETTE NOT LIMITED TO THE SPECIES NOTED ABOVE.
2. SPECIES SELECTED FOR A BALANCE OF FOLIAGE TEXTURE, SEASONAL CHANGE, AND AESTHETICS.
3. SPECIES WILL BE DROUGHT TOLERANT, PEST-RESISTANT, AND NON-INVASIVE, AND HIGH EFFICACY AT FILTERING PARTICULATE MATTER (FINE FOLIAGE, ROUGH BARK).
4. 80% OF TREES TO BE EVERGREEN.
5. FOR DIVERSITY OF PLANT MATERIAL, NO MORE THAN 10% OF ANY ONE TREE SPECIES WILL BE USED.
6. INCLUSION OF APPROPRIATE CALIFORNIA NATIVES.
7. FAST-GROWING SPECIES BALANCED WITH LONG-LIVED SPECIES.
8. GOAL OF 85% CANOPY WITHIN 5-7 YEARS WITH 15% OPEN FOR MAINTENANCE ACCESS; ULTIMATELY 100% CANOPY WHERE PG&E EASEMENT PERMITS.
9. MATURE EXISTING LIVE OAKS ON THE CALTRANS PROPERTY INCORPORATED INTO THE DESIGN.
10. TREES LOCATED IN DRAINAGE AREAS WILL BE SELECTED FOR THEIR SUITABILITY FOR SEASONAL INUNDATION.
11. IRRIGATION FROM SITE WELL; NO CITY WATER.

THIS DOCUMENT CONTAINS INFORMATION PROPRIETARY TO STUDIO T-SQL, INC. AND IS FURNISHED IN CONFIDENCE FOR THE LIMITED PURPOSE OF EVALUATION OR REVIEW. THIS DOCUMENT OR ITS CONTENTS MAY NOT BE USED FOR ANY OTHER PURPOSE AND MAY NOT BE REPRODUCED OR DISCLOSED TO OTHERS WITHOUT THE PRIOR WRITTEN CONSENT OF STUDIO T-SQL, INC. ALL RIGHTS RESERVED. COPYRIGHT 2010.

The Promenade
Davis, CA

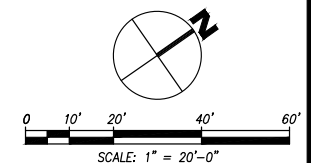
Davis Gateway
3500 Anderson Road
Davis, CA 95616

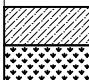

Sheet Title:
URBAN FOREST EXHIBIT

Job No. 22004
Date: 05/12/2023
Scale: 1"=20'
Drawn By: WM/RV/DF

Sheet No:

L2.03

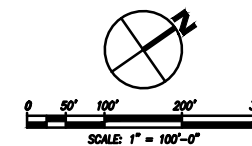
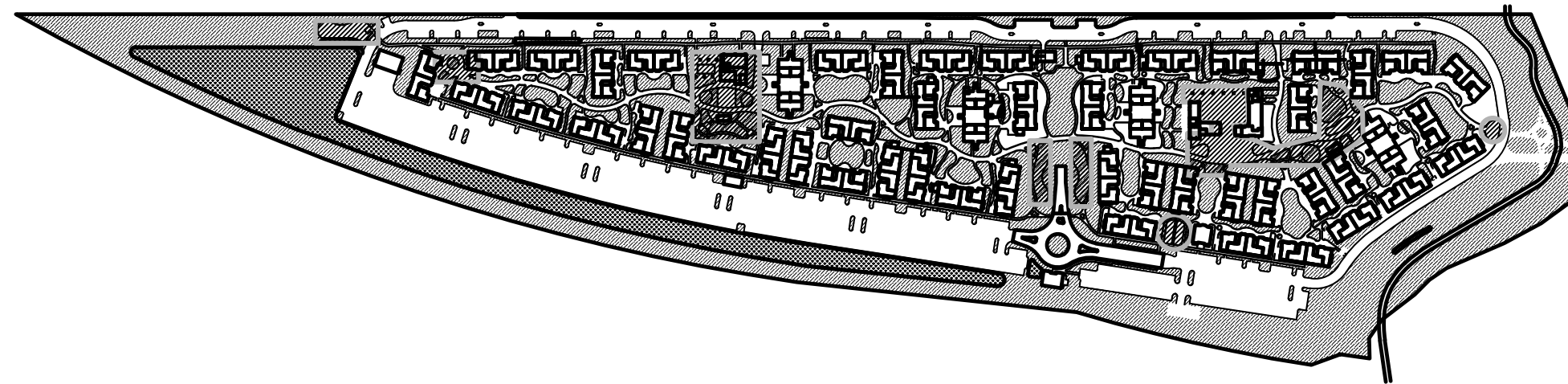


LANDSCAPE CALCULATIONS		
	AREA	% OF SITE
TOTAL SITE AREA:	47 ACRES	-
 LANDSCAPE AREA	24 ACRES	50%
 USABLE OPEN SPACE	3 ACRES	6%
SUB AREA C OPEN SPACE (PUTAH CREEK, DETENTION AREA, OPEN SPACE)	13 ACRES	27%

NOTES:

1. FOR THE PURPOSES OF THIS TABLE, LANDSCAPE AREA IS DEFINED AS NON-PAVED AREAS DEDICATED TO PLANTING, SUCH AS TREES, SHRUBS, AND GROUNDCOVER. AREA INCLUDES URBAN FOREST.
2. FOR THE PURPOSES OF THIS TABLE, USABLE OPEN SPACE IS DEFINED AS AN OUTDOOR AREA DESIGNED TO FACILITATE THE ACTIVE OR PASSIVE RECREATION OR LEISURE USE OF THE RESIDENTS.

THIS DOCUMENT CONTAINS INFORMATION PROPRIETARY TO STUDIO T-SQ, INC. AND IS FURNISHED IN CONFIDENCE FOR THE LIMITED PURPOSE OF EVALUATION OR REVIEW. THIS DOCUMENT OR ITS CONTENTS MAY NOT BE USED FOR ANY OTHER PURPOSE AND MAY NOT BE REPRODUCED OR COPIED TO OTHERS WITHOUT THE PRIOR WRITTEN CONSENT OF STUDIO T-SQ, INC. ALL RIGHTS RESERVED. COPYRIGHT © 2016



The Promenade
 Davis, CA

Davis Gateway
 3500 Anderson Road
 Davis, CA 95616

Sheet Title:
**OPEN SPACE
 EXHIBIT**

Job No. 22004
 Date: 05/12/2023
 Scale: 1"=100'
 Drawn By: WM/RV/DF

Sheet No:

L2.04